

## Logging Files from the Model 931A Power Analyzer

### ***Introduction***

Frequently 931A users want to download data stored in their 931A memory, or download the measurement results directly to their computer. For a 931A with extended memory, users should obtain a copy of the Windows program produced by Arbiter Systems called PowerCSV™. PowerCSV™ provides an easy tool for accessing and downloading data from the 931A *with extended memory*. For those without extended memory, most downloading may be done using a terminal emulation program, such as HyperTerminal, Procomm, or a freeware program available on the Arbiter website called Tera Term Pro.

This addendum describes how to download two types of data – Bitmapped and Spreadsheet – from the Model 931A/930A using Tera Term Pro.

### ***Downloading Tera Term Pro***

1. Log on to the Arbiter Systems website at [www.arbiter.com](http://www.arbiter.com)
2. Scroll down to Downloads on the Home page and click on that page.
3. On the Software Repository page, scroll down to Miscellaneous, and click on the file named Ttemp23.exe.
4. Download the file to your computer and install it on your machine.

### ***Downloading Bitmapped Data***

To download the actual data as it is displayed on the 931A screen, you must choose to download it as a Bitmapped file. This is selected from the Menu options on the 931A keyboard. (Screen shots in these instructions were downloaded from this procedure.)

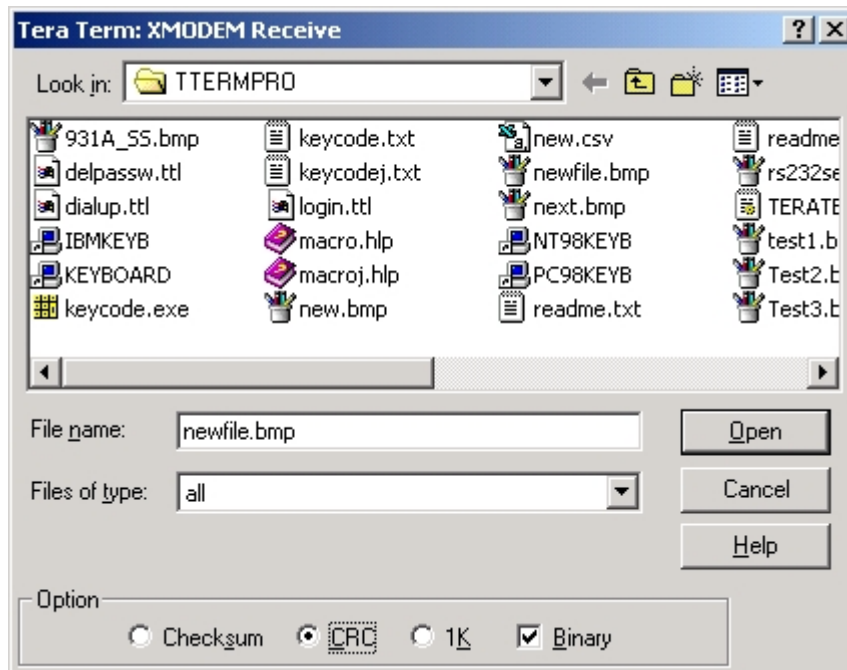
1. Check the communication parameters on the 931A found under MENU->RS-232 Port Setup. Write down these settings if necessary. Note that Flow Control must be set for Data Ready.
2. Press the ESCAPE button once and move the cursor down to Print Selections and press ENTER. Change the settings to those shown below, if necessary. Set to Bitmap.

```
PRINT SELECTIONS
Print Screen:  Ascii Format
               Graphics (FX-80)
               →Bitmap (Xmodem Transfer)

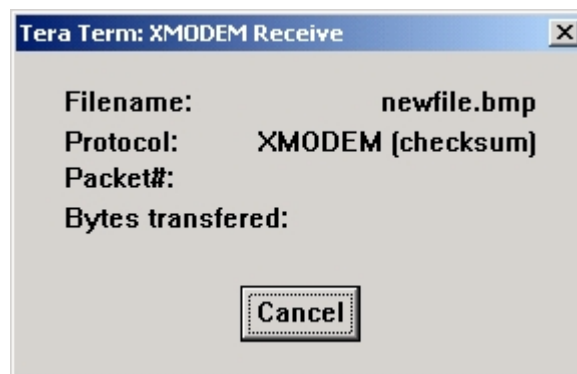
Spreadsheet:  Send Spreadsheet
              (Comma Delineated)
```

3. Open Tera Term Pro and verify that the communication parameters match those of the 931A. From the main menu in Tera Term Pro, select Setup->Serial Port. Flow Control should be set to None.
4. From the main menu in Tera Term Pro, select File->Transfer->Xmodem->Receive. A SaveAs window should appear for you to type in the name of the downloaded file.

Always name it with the *.bmp* extension. Also, *the CRC and Binary fields should be checked.*



5. Press Enter, or click the Open button and a Xmodem Receive window should appear that shows bytes received. None should be received yet.



6. Set up the 931A to view the data you wish to have copied as a bitmapped file and press the PRINT button on the 931A. At this time you should see the above screen indicate approximately 2048 bytes being transferred. The Xmodem Transfer screen should disappear after the data transfer is complete.
7. Your screen shot should be stored in the TTERMPRO directory under Program Files, unless you chose to store it in a different directory.
8. These .bmp files may be pasted directly into documents, or viewed in Paint or other bitmap viewers. Alternatively, you may wish to convert them into smaller more efficient file formats, like JPG.

### Downloading Spreadsheet Data Using Tera Term Pro

To continually log data from the 931A to a computer, use the Log Data feature found in Tera Term Pro, or similar terminal programs.

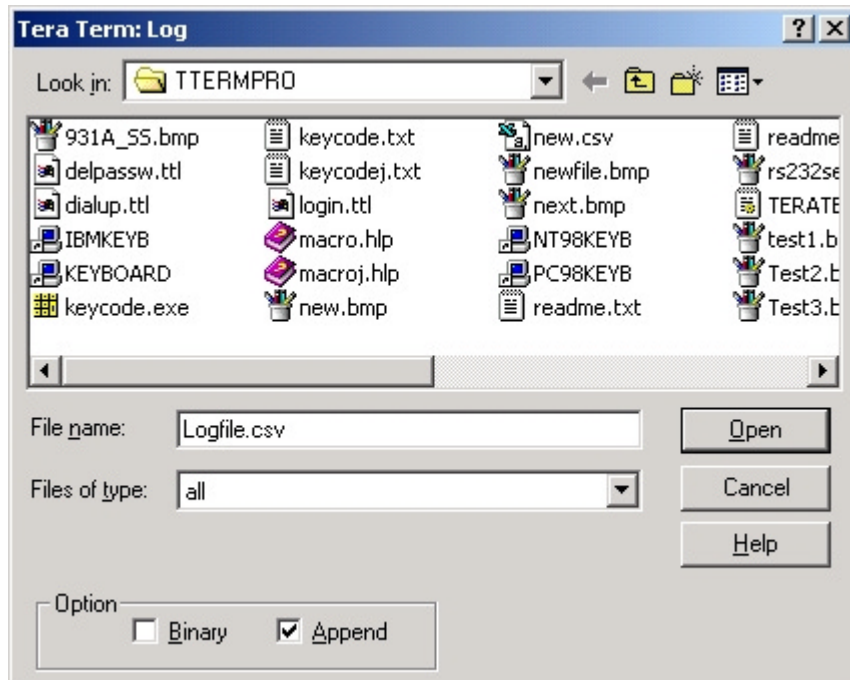
1. Check the communication parameters on the 931A found under MENU->RS-232 Port Setup. Write down these settings if necessary. Note that Flow Control must be set for *Xon/Xoff*.
2. Press the ESCAPE button once and move the cursor down to Print Selections and press ENTER. Change the settings to those shown below, if necessary. Set to 'Send Spreadsheet.' Press the ENTER and the ESCAPE key.

```

PRINT SELECTIONS
Print Screen:  Ascii Format
                Graphics (FX-80)
                Bitmap (Xmodem Transfer)

Spreadsheet:   →Send Spreadsheet
                (Comma Delineated)
  
```

3. Open Tera Tem Pro and verify that the communication parameters match those of the 931A. From the main menu in Tera Term Pro, select Setup->Serial Port. Flow Control should be set to None.
4. From the main menu in Tera Term Pro, select File->Log. A TeraTerm: Log window should appear for you to type in the name of the downloaded file. Always name it with the *.csv extension*. Also, *the Append field should be checked*.



5. Set up the 931A to view the data you wish copy as spreadsheet data, and press the PRINT button. At this time, comma separated data should appear in the Tera Term Pro data window.

6. Check for the Log File window to be open (on the Taskbar). When logging data in Tera Term Pro, the Log File window indicates that the file named above will continue to be open for appending data. Subsequent presses of the PRINT button on the 931A / 930A will send and append that data to the same data file while it remains open.
7. Click the Close button in the Log File window to close the data file from further appending.
8. After closing, data in the data file may then be imported into spreadsheets like Excel.